

# Accommodation Guide

The guide to Crescent Head



*Experience.*

**Elders**

**Real Estate**

Crescent Head, 02 6566 0306, Shop 4 Rankine Street, Crescent Head NSW 2440  
Port Macquarie, 02 6584 1199, 62 Clarence Street Port Macquarie NSW 2444



Elders Real Estate Crescent Head have the largest selection of self contained holiday accommodation within the Crescent Head region.

Crescent Head is a popular tourist, swimming, surfing and fishing destination only 4.5 hours north of Sydney.

**Address:** Shop 4 Rankine Street, Crescent Head NSW 2440

**Phone:** Holiday Department 02 6566 0306

Sales Department 02 6566 0306

Property Management 02 6566 0306

**Fax:** 02 6566 0546

**Email:** [matt.day@eldersrealestate.com.au](mailto:matt.day@eldersrealestate.com.au)

**Web:** [crescentholidays.com.au](http://crescentholidays.com.au) [crescent.eldersrealestate.com.au](http://crescent.eldersrealestate.com.au)

**Disclaimer:**

- Images are indicative only of the property and may relate to a different unit.
- Each property is individually owned and furnishings may change from time to time.
- Errors and omissions are excluded, please make further enquiry through our office.
- Booking Terms & Conditions can be viewed online at;  
<http://www.crescentheadholidayaccommodation.com.au/holiday/Booking-Information>

**Choosing Elders Real Estate Port Macquarie is Choosing Success**





## Fantastic Views and Handy Location



### AAA Views, 2 View Street, Crescent Head

**Sleeps: 6**

**Parking: 2**

**Bedrooms: 3**

**Bathrooms: 2**

AAA Views is located in View Street, so as you would expect it has one of the best views in town. You can check the surf on the Point without even leaving the house! This renovated property features large main bedroom with queen size bed, deck with dining and relaxing areas, and veranda with "breakfast bar" to really get your day off on the right foot! The high ceilings offer an old school charm and the galley style kitchen has views to die for.

As well as the second upstairs bedroom with two king single beds there is a "flat" downstairs with a king size bed, lounge area, bathroom and kitchen area accessed by an external staircase. There's also a lock-up-garage with auto door.

**Bedding:** Queen bed in the main, two king singles in the 2nd and king bed in the 3rd. No linen included.



## Modern Condo with Fantastic Views



### AB's Condo, 19a Dulconghi Street, Crescent Head

**Sleeps: 5**  
**Bedrooms: 2**

**Parking: 2**  
**Bathrooms: 1**

AB's Condo is a brand new 2 bedroom unit with fantastic views over the Bay and a sunny northerly aspect. The main bedroom has a queen size bed and built in wardrobe and faces out onto the tiled patio and beautiful views. The second bedroom has a double bed and a single bed, a built-in robe and also enjoys lovely water views. The tiled bathroom contains a shower and bath and there is a separate toilet. Laundry facilities are a front loading washing machine in the kitchen area with a clothesline out the side of the house. The kitchen has a 2 element electric cooktop that sits on the benchtop plus a microwave and electric frypan - of course you'll be BBQing most of the time on the patio gas BBQ.

AB's Condo ensures a fuss free friendly holiday for one or two couples or the small family. AB's Condo is the ground floor of a 2 storey duplex and the owners stipulate please no smoking inside AB's Condo. There are two open parking spaces. Please note you need to bring your sheets, towels and pillow cases.

**Bedding:** Queen bed in the main with a double and a single bed in the 2nd bedroom. No linen included.





## Pet Friendly Holiday Cottage



### A Bella Ondine, 4 Belmore Street, Crescent Head

**Sleeps: 6**  
**Bedrooms: 3**

**Parking: 1**  
**Bathrooms: 1**

Located just a few minutes walk from the town centre and the beach is this quaint post WW2 dwelling that offers travellers and holidaymakers a glimpse into the 50's with period furniture and fittings as well as a wonderful array of pastimes including table tennis, darts, board games, BBQ, TV & of course, unlimited WIFI!

A Bella Ondine is a secure and pet friendly home allowing you to bring your beloved pets with you.

Featuring gas heating for the winter months as well as ceiling fans throughout for year round comfort.

**Bedding:** Queen bed in the main, a double in the 2nd and a single + a trundle in the 3rd bedroom. No linen included.





## Modern and Centrally Located



### Adrift, 5B Scott Street, Crescent Head

**Sleeps: 5**  
**Bedrooms: 2**

**Parking: 1**  
**Bathrooms: 2**

This modern townhouse is centrally located just around the corner from the village centre. It features free WI FI, Vittoria Coffee Machine views of the beach and golf course from the sunny deck and you'll love being able to walk to everything. The main bedroom is spacious and airy with a queen bed, the second bedroom features a "tri-bunk" with a double bed base + a single bunk on the top. There is also a sofa bed in the lounge if required. Two bathrooms are located on each of the ground and first floors for your convenience.

Set your cares Adrift and enjoy a relaxing break!

**Bedding:** Queen bed in the main and a bunk bed with a double base and a single on the top in the 2nd bedroom. No linen included.





## Relax and Unwind in this Super Spacious Holiday Home



### Allamanda House, 3 Willow Street, Crescent Head

Perfect for two families or an extended family, Allamanda House offers a wonderful relaxing pet friendly holiday, being an easy walk to the beach, Killick Creek and the shops.

Offering 5 bedrooms, 2 bathrooms and 2 kitchens with a dishwasher to ensure that everyone has plenty of space. Enjoy the lovely leafy balcony upstairs, stroll to the beach or have a coffee at the numerous cafes within just a few minutes walk.

Providing 3 televisions including Foxtel pay TV, Allamanda House will have you coming back year after year to your beach home away from home. Travel lightly with full laundry facilities including washing machine and dryer. Includes two off street parking spaces (garage not included).

**Bedding upstairs:** Queen bed in the main and 2nd bedrooms and a double bed in the 3rd bedroom.

**Bedding downstairs:** Double bed + a single in the 4th and 2 singles in the 5th bedroom (wheelchair access). No linen included.

**Sleeps: 11**

**Parking: 2**

**Bedrooms: 5**

**Bathrooms: 2**





**Only 150 Metres to the Beach**



**Almare, 7 Gowing Street, Crescent Head**

**Sleeps: 6      Parking: 2**  
**Bedrooms: 3      Bathrooms: 1**

Located at the eastern end of the village on a level block, this facelifted older style 2 bedroom cottage has loads of character. The roomy living area looks across the golf course and out to the sea. Almare offers a great value, traditional Aussie Beach House holiday home experience.

Please note bedroom 3 is a sleeping nook at one end of the large L shaped living area.

For your relaxed holiday convenience, the home includes washing machine, microwave oven, LCD TV and DVD. Lock up the car, Almare is located only 150 metres to the beach and walking distance to cafes and restaurants.

**Bedding:** Queen bed in the main, double bed in the 2nd and 2 singles in the 3rd (sleep nook). No linen included.





## Pet Friendly Holiday Home



### Aloe, 20 Hodgson Street, Crescent Head

**Sleeps: 11**      **Parking: 2**  
**Bedrooms: 4**      **Bathrooms: 1**

Aloe is a pet friendly original Crescent Head weekender with a new kitchen including SMEG and Bosch appliances. A new bathroom that will make you feel like you are staying in any top hotel. Large screen Panasonic TV with blu-ray and external hard-drive support. Some of the great features of Aloe include four bedrooms, a lovely sunny deck, an easy walk to the beach and plenty of space. The lounge-room has a slow combustion wood fire - perfect for our winter nights.

Aloe is a great beach house with a large yard for the kids to run around in and lovely, private open-air hot shower for when you get back from the beach, or just prefer to shower in the outdoors! Great hardwood floors and spaces to relax. Perfect for catching up on a book and spending time with family and friends.

**Bedding:** Queen bed in the main and 2nd bedrooms, 2 sets of single bunks in the 3rd and triple single bunks in the 4th. No linen included.



## Cozy Crescent Head Getaway with a Pool



### Ambiance Cottage, 1 Kinchela Street, Crescent Head

**Sleeps: 4**      **Parking: 1**  
**Bedrooms: 1**      **Bathrooms: 1**

Charming one bedroom self contained apartment with kitchenette, plus a very comfortable sofa bed in the lounge/dining room.

Private balcony and BBQ overlooking the pool and beautiful tropical gardens.

Only a five minute walk to both the front and back beaches as well as local shops, cafes and the Crescent Head Country Club.

**Bedding:** Queen bed in the main and double sofa bed in the lounge. No linen included.





## Cozy Getaway in Beautiful Crescent Head



### Anglesea, 17 Hodgson Street, Crescent Head

**Sleeps: 8**

**Parking: 2**

**Bedrooms: 4**

**Bathrooms: 2**

Two storey holiday house purpose built in 2002 and recently repainted inside and out. This well equipped house is ideal for two families. On each floor are two bedrooms and a bathroom with the stairs between upstairs and downstairs being off the external deck, as shown in the main photo. Please note there are no internal stairs. There are two separate decks for outdoor living. Upstairs has a kitchen with a dishwasher. For your holiday convenience there is a gas BBQ on the entertaining deck. Located in a lovely quiet location and an easy walk to the shops and beach.

You are welcome to bring your pets with you to Anglesea.

**Bedding:** Queen bed in the main and 2nd bedrooms with two singles in each of the 3rd and 4th bedrooms. No linen included.



## Quiet Duplex with Ocean Views



### Units 1 & 2 Apollo, 9 Hodgson Street, Crescent Head

**Sleeps: 4 / 6**  
**Bedrooms: 3 / 2**

**Parking: 1**  
**Bathrooms: 1**

Apollo is a duplex in a fantastic location just one block from the shops, cafes and tavern. Two and three bedroom accommodation provides for easy living during your holiday.

Park your car in the covered carport and walk to everything. Enjoy a BBQ on the veranda whilst enjoying the sea breeze, cleaning up will be easy during your holiday with the use of the dishwasher. You're on holidays after all!

Apollo offers a great value, comfortable holiday in an ideal location.

**1 – Bedding:** Queen bed in main and 2nd bedrooms, two singles in the 3rd bedroom. No linen included.

**2 – Bedding:** Queen bed in the main bedroom and two singles in the 2nd bedroom. No linen included.





## Resort Style Beach Home with Pool & Tennis Court



### Arcadia, 41 Skyline Cres, Crescent Head

**Sleeps: 10**

**Parking: 4**

**Bedrooms: 4**

**Bathrooms: 2**

Arcadia Beach House is a unique hideaway home adjoining the Goolawah Beach Reserve with stunning unspoilt ocean and mountain views. The property is quiet and private allowing family and friends to relax and enjoy the swimming pool, tennis court, nearby beaches, or relax on the deck or pool terrace. Please note - A \$1000 bond is payable on this property. Pets are allowed by prior arrangement through Elders Crescent Head.

Enjoy all the features Arcadia Beach House has to offer including panoramic views from the living rooms, balconies and bedrooms, 18m lap pool with classic styled entertainment area, tennis court with night lighting till 10pm, Air-conditioned bedrooms for your comfort, whale watching and dolphin spotting from the deck, Foxtel with sports and movies, Wi Fi, iPod docking station, Use of home DVD library, telescope and board games.

All bookings at Arcadia Beach House require a \$1000 CASH BOND to be paid. This will be refunded following post departure inspection. If you wish to bring your pet the bond required is \$1500.

**Bedding:** Queen bed in main, 2nd and 3rd bedrooms, queen + single bunk beds in 4th bedroom. No linen included.





## Beautifully Renovated, Views & Location



### Awesome View, 4 View Street, Crescent Head

**Sleeps: 6**

**Parking: 1**

**Bedrooms: 3**

**Bathrooms: 1**

Located just 2 blocks from the shops and pub in View Street, "Awesome View" rewards the short walk with some of the best views Crescent has to offer. The just renovated home is bright and airy with high ceilings and gorgeous polished hardwood floors. There are 3 decks including the covered main deck off the living/dining area, so there's always a good spot to sit and enjoy the coastal climate. Accommodation consists of 3 bedrooms with King, Queen, and 2 single beds. The perfect spot for a relaxing break.

You need to bring your sheets for the queen and single beds, towels, pillow cases, tea towels, bath mat and hand towels. Please note the king bed has sheets supplied and is made up for your arrival.

**Bedding:** King bed in main, queen bed in 2nd bedroom, 2 king singles in 3rd bedroom. Please note the king bed has linen supplied. You will need to provide all other linen.





## Sensational Views & Free Wi-Fi



### Bally High, 20 Dulconghi Street, Crescent Head

**Sleeps: 8**      **Parking: 1**  
**Bedrooms: 4**      **Bathrooms: 2**

Enjoy Bally High's magnificent views of the ocean, beach, Killick Creek and Dulconghi Mountain.

The large sunroom on the northern side makes for a relaxing observation point. There are 4 bedrooms, the fourth being a large room downstairs with a 2nd shower and toilet, accessed via external stairs - ideal for the extended family. Bally High features free Wi-Fi, a gas BBQ and single garage with remote door.

**Bedding:** Double bed in main & 2nd bedroom, single bunk beds in 3rd bedroom, king single and a queen bed in 4th bedroom. No linen included.





## Modern Home with Pool in Rural Setting



### Banyula, 103 Neville Morton Drive, Crescent Head

**Sleeps: 8**

**Parking: 2**

**Bedrooms: 4**

**Bathrooms: 3**

Banyula offers everything you need for a great family Holiday. Located in a quiet rural estate only 4km from the village, the kids will love the swimming pool, the space and the quiet surrounding streets are great for bike riding. Of course the beach, bakery and shops are only 5 minutes drive away too. The house features a large main bedroom at the northern end with ensuite, 2 living areas, and another 2 bedrooms and bathroom at the other end of the house. You'll love sitting on the deck watching the kids in the pool and enjoying the peaceful rural outlook.

Please note that there are actually 3 bedrooms and the sofa bed listed in the specifications is located in the 2nd living area. Your pets are welcome at Banyula, but outside only. The property is not fenced.

**Bedding:** Queen bed in main, double bed in 2nd bedroom, 2 singles in 3rd bedroom and double sofa bed in the 4th bedroom (2nd living area). No linen included.





## Spectacular Ocean Views



### Barrels Beach House, 28 Dulconghi Street, Crescent Head

**Sleeps: 10**

**Parking: 2**

**Bedrooms: 5**

**Bathrooms: 3**

Spectacular ocean views from upper level which includes deck, living, dining, kitchen and four bedrooms. Downstairs is an extra bedroom, 3 bathrooms throughout, double garage and popular Dulconghi Street location.

"Barrels" is perfect for two families with two queen bedrooms, three single bunk bedrooms and three bathrooms. "Barrels" features stunning coastal views from most of the house and yes, you can see the waves breaking on the Point! There is a large covered deck, gas BBQ and double garage. Enjoy a relaxing holiday in the "Barrels".

Make light work of your holiday with a dishwasher in the kitchen, and pack lightly with washing machine and laundry facilities.

**Bedding:** Queen bed in main and 2nd bedrooms, two single bunks + a single in 3rd bedroom, two single beds in 4th and one single in the 5th bedroom. No linen included.





## Modern & Stylish with Ocean Views



### Units 1 & 2 Beach Club, 5 Gowing Street, Crescent Head

**Sleeps: 8**      **Parking: 2**  
**Bedrooms: 2**      **Bathrooms: 2**

Beach Club 1 & 2 are well equipped modern townhouses which features views over the golf course to the point. Set over two levels the open plan living/dining area leads out to a spacious balcony with hooded gas barbeque. Its central location means the shops, club and beach are just around the corner.

The garage is for storage of surfboards, bikes, fishing rods etc and there is off street parking for two cars. There is one bedroom upstairs with a queen bed, one bedroom downstairs with a queen bed, and a "sleep-out" area downstairs with a tri-bunk and single bed.

**Bedding:** Queen bed in main and 2nd bedrooms, bunk bed with double base and single on top + a single in the downstairs sleep-out area. No linen included.





## Waterfront Apartments



### Units 1 – 6 Beachfront, 1 Willow Street, Crescent Head

**Sleeps: 2 / 5 / 6    Parking: 1**  
**Bedrooms: 1 / 2    Bathrooms: 1**

Beachfront is the perfect holiday destination for everyone - from couples looking for a romantic getaway to multiple family groups searching for a memorable beach holiday.

Set in a tranquil location, each unit overlooks Killick Creek which backs onto the main surfing beach. Beachfront is the only truly waterfront property in Crescent Head.

- 1 – Bedding:** Queen bed in main bedroom, single bunk beds + a single in 2nd bedroom. Linen **not** included.
- 2 & 4 – Bedding:** Queen bed in main bedroom. Linen is included.
- 5 – Bedding:** Queen bed in main bedroom, bunk bed with double base + a single on top. Linen is included.
- 3 & 6 – Bedding:** Queen bed in main bedroom, 2 sets of single bunk beds in 2nd bedroom. Linen is included.





## 50 Metres to Country Club



**Beachwalk, 8 May Street, Crescent Head**

**Sleeps: 7**  
**Bedrooms: 2**

**Parking: 1**  
**Bathrooms: 1**

Atmospheric timber cottage in the middle of the village with all amenities right at your doorstep.

Sunny open plan lounge, dining and kitchen areas which open out onto the large verandah. Simply park your car and walk everywhere! Includes free WI-FI to help keep your children occupied.

Beachwalk has two bedrooms both with queen beds and a futon in the lounge as well as a sleep out with two small built-in single bunk beds (suitable for small children only).

**Bedding:** Queen bed in main and 2nd bedroom, double futon sofa bed in the lounge, and two small single beds in the sleep out. No linen included.





## Sensational Views!



### Beau Soleil, 28 East Street, Crescent Head

**Sleeps: 10**

**Parking: 4**

**Bedrooms: 5**

**Bathrooms: 2**

Sunny five (5) bedroom holiday home ideal for two (2) families.

Upstairs enjoys four bedrooms with large open plan living areas which open out onto a deck with stunning ocean views. Modern kitchen with dishwasher and spa bath in the main bathroom.

Downstairs consists of 5th bedroom with a single bed and combined laundry / 2nd bathroom. Walk straight down East Street to the shops and beach. A great home for a quiet, relaxing holiday with the family.

**Bedding:** Queen bed in main, 2nd and 3rd bedrooms, bunk bed with double base and single on top in the 3rd and a single bed in the 4th bedroom. No linen included.





## Close to the Beach



### Bella Vista, 9 East Street, Crescent Head

**Sleeps: 6**

**Parking: 1**

**Bedrooms: 3**

**Bathrooms: 1**

Bella Vista is centrally located being just 50m from the Country Club and shops. Enjoy water views from the living area and sunny verandah which includes a hooded gas BBQ and sun lounges to relax upon.

The well appointed kitchen is spacious and includes a dishwasher to make your holiday time a breeze. There is a second toilet off the laundry and the bathroom has recently been renovated.

Bella Vista offers a truly relaxing family holiday experience where you and the kids can walk to everything. Please note the third bedroom is a "walk through" sleeping area separated from the hall by a curtain. This area contains the single bunk beds. It is not a proper bedroom, rather an alcove or sleep-out area.

**Bedding:** Double bed in the main, bunk bed with double base and single on top + two singles in the 2nd and single bunk beds in the 3rd. No linen included.





## Close to the Beach



### Units 1 & 2 Bellhaven, 17 Willow Street, Crescent Head

**Sleeps: 5**  
**Bedrooms: 2**

**Parking: 1**  
**Bathrooms: 1**

Bellhaven 1 & 2 are comfortable two bedroom townhouses located only 50m from Killick Creek. Unit 2 features a large north facing covered verandah perfect for holiday entertaining which overlooks the reserve.

It is an ideal base for those with young children wanting to be as close to the beach as possible.

Lockable laundry facilities with machine is downstairs, so you can travel light.

**1 – Bedding:** Queen bed in the main, single bunk beds + a single bed in the 2nd bedroom. No linen included.

**2 – Bedding:** Double bed in the main, bunk bed with double base and single on the top in the 2nd bedroom. No linen included.



## Central Location, Walk to Everything



### Berry, 16 East Street, Crescent Head

**Sleeps: 10**

**Parking: 1**

**Bedrooms: 5**

**Bathrooms: 2**

Park the car and forget about it - "Berry" is located less than one block from the shops and club so you can walk to everything including the beach which is only an extra block away.

"Berry" is well appointed and features a large covered deck perfect for outdoor holiday entertaining as well as a stunning rooftop deck with 360 degree views.

If you are looking for a winter getaway, "Berry" has a cosy open fireplace for you to enjoy.

Perfect for extended families or two families traveling together, "Berry" has 5 bedrooms, 2 bathrooms, 3 showers and 3 toilets. "Berry" offers everything you need for two or even three families to enjoy a relaxing holiday in Crescent Head.

**Bedding:** Queen bed in the main, 2nd and 5th bedrooms, bunk bed with double base and single top in the 3rd bedroom and single bed in the 4th bedroom. No linen included.





## Pet Friendly Holiday Home



### Billy's on Main, 44 Main Street, Crescent Head

**Sleeps: 7**

**Parking: 2**

**Bedrooms: 3**

**Bathrooms: 1**

Bring your beloved pet on holidays with you to "Billy's". Billy's is a neat three bedroom home with carport and is an easy 10 minute walk to the beach. The large living and dining area offers plenty of space and the backyard is fenced to keep your treasured pet safe.

As with all our pet friendly properties you are required to vacuum throughout to remove all pet hair, and pick up and dispose of any dog poo in the backyard. Failure to honour these requirements will result in extra cleaning charges.

**Bedding:** Queen bed in the main, double bed in the 2nd, two singles and a trundle in the 3rd bedroom. No linen included.





## Overlooking Creek & Beach



### Units 1 & 2 Bimbimbi, 11 Willow Street, Crescent Head

**Sleeps: 7**  
**Bedrooms: 2**

**Parking: 1**  
**Bathrooms: 1**

Quality set of 2 x two storey townhouses in convenient location near the beach. Each townhouse is fully self contained with lock up garage, laundry, storeroom and large sunny deck. Both contain washing machine, TV and DVD. Only about 100 metres to the beach.

Two bedrooms upstairs with optional 3rd bedroom with ensuite downstairs at an extra charge of \$150 per week. Sleeps 5 upstairs and sleeps 2 downstairs - 1 queen bed.

**Bedding:** Queen bed in the main, 2 single bunks in the 2nd bedroom and a double sofa bed in the living room. Linen not included.





**50 Metres from Shops**



## **Breakaway, 11 Scott Street, Crescent Head**

**Sleeps: 5**

**Parking: 1**

**Bedrooms: 2**

**Bathrooms: 1**

Breakaway is a well maintained, comfortable cottage in an excellent location about 50m from the shops and country club - and only a few minutes walk to the beach.

People come back to Breakaway year after year for a relaxing Crescent Head holiday experience and it is ideal for couples or the small family.

**Bedding:** Queen bed in the main bedroom, bunk bed with double base and single on top in the 2nd bedroom. No linen included.





## Modern Townhouses with Ocean Views



### Units 1 & 2 Breakers, 13 East Street, Crescent Head

**Sleeps: 8**      **Parking: 2**  
**Bedrooms: 3**      **Bathrooms: 2**

Breakers 1 & 2 are 3 bedroom townhouses located in the eastern end of the village. The living area flows onto the large verandah with stunning views of the coastline. There is an ensuite to the downstairs bedroom, large kitchen with dishwasher and lock-up-garage with remote door.

Upstairs has two bedrooms and one bathroom, open plan living/dining/kitchen area and laundry. The kitchen has a dishwasher. There is a paved courtyard out the back with gas BBQ.

Downstairs has one bedroom with ensuite, and you can also access the lock up garage from this room.

**Bedding:** Queen bed in the main and 3rd bedrooms, three single beds and a trundle in the 2nd bedroom. No linen included.





## Renovated with Ocean Views



### Caerulea, 20 Stewart Street, Crescent Head

**Sleeps: 8**

**Parking: 2**

**Bedrooms: 5**

**Bathrooms: 2**

Newly renovated bright and airy home in the super popular Stewart Street location.

The covered deck and living area feature views straight across the golf course to the beach and over the ocean. The fully equipped and modern kitchen has a dishwasher to make entertaining a breeze and there is a 2nd shower and toilet downstairs. Ideal for large or extended families, offering three bedrooms with double beds in each and two bedrooms with singles for the kids.

**Bedding:** Double bed in the main, 2nd and 3rd bedrooms, single bed in each of the 4th and 5th bedrooms. No linen included.





## Amazing Views, Pet Friendly



### Charm Cottage, 58 Skyline Crescent, Crescent Head

**Sleeps: 6**      **Parking: 2**  
**Bedrooms: 3**      **Bathrooms: 3**

Enjoy the stunning vista over Goolawah Beach towards Point Plomer, or to the north over Killick Beach from the back deck. This well maintained and equipped home is also "pet friendly", provided your pets are happy on the verandahs as the yard is not fenced.

Features include ensuite, hooded gas barbecue and new kitchen.

Charm Cottage is as inviting as it sounds. There is room for two cars under the deck and one in the driveway. Free WIFI and smart TV.

**Bedding:** Queen bed in the main and 2nd bedroom, double bed in the 3rd bedroom. No linen included.





## Ocean Views & Close to Shops



### Clareview, 8 Korogora Street, Crescent Head

**Sleeps: 6**

**Parking: 1**

**Bedrooms: 2**

**Bathrooms: 1**

Clareview offers a sunny, relaxed holiday feel and is ideally located in the eastern end of the village being a short stroll to the beach, shops, Country Club and restaurants.

Panoramic views are enjoyed from the living area, main bedroom and balcony. Just park the car in the lock-up-garage, you won't need it again during your stay in Clareview.

**Bedding:** Queen bed in the main bedroom and four singles in the 2nd bedroom. No linen included.





## Great for 2 Families in Central Location



### Clearwater House, 6 Hodgson Street, Crescent Head

**Sleeps: 8**      **Parking: 2**  
**Bedrooms: 4**      **Bathrooms: 2**

Clearwater is a great holiday escape for two families with a living area, bathroom and two bedrooms on each level.

The verandah enjoys lovely ocean views and the location is fabulous being just one block from the shops. There is a lock-up-garage for one (small) car and an off street parking spot in front of the house for another. For extra ease and convenience all your linen is included (sheets, pillow cases, bath towels and mats) just bring your beach towels.

Enjoy your next holiday break with family at Clearwater.

**Bedding:** Queen bed in the main and 2nd bedrooms, two singles in the 3rd and single bunk beds in the 4th bedroom. Linen is included.





## Ocean Views and Large Deck



### Coastwatch, 26 Comara Terrace, Crescent Head

**Sleeps: 8**      **Parking: 2**  
**Bedrooms: 4**      **Bathrooms: 2**

As the name suggests, Coastwatch enjoys lovely views of the coastline from the living area, two of the four bedrooms and the large entertainment deck. The layout is great, with a bedroom in each corner of the house and the central living/dining area and big deck flowing off the living. Coastwatch is a very comfortable holiday home with a year-round holiday atmosphere. This well maintained and fully equipped holiday home is perfect for a large family or two couples.

There is a double carport with level street access.

**Bedding:** Queen bed in the main, double bed in the 2nd bedroom and two singles in each of the 3rd and 4th bedrooms. No linen included.





## Spectacular Views with Large Deck



### Cooinda, 17 Dulconghi Street, Crescent Head

**Sleeps: 5 / 10**

**Parking: 2**

**Bedrooms: 2 / 3**

**Bathrooms: 1 / 2**

Cooinda is a commanding home with spectacular ocean views from both levels. There is a living area, bathroom, and large entertaining deck on each level. Downstairs has a kitchenette in addition to the granite kitchen with dishwasher upstairs. Cooinda is ideal for the extended family, or in off peak periods book upstairs only as great holiday destination for a couple or small family. There is a garage ideal for storing boards or bikes and the kitchen features a dishwasher to make your break that little bit easier.

Choose the upstairs only for families up to 5, or the entire house which sleeps up to 10.

**Upstairs Only Bedding:** Queen bed in the main, single bunk beds + a single in the 2nd bedroom.

**Entire House Bedding:** Queen bed in the main, single bunk beds + a single in the 2nd bedroom, queen bed, double sofa bed and two singles in the 3<sup>rd</sup> bedroom. No Linen included.





## Super Location, Close to Beach & Shops



### Crescent View, 12 May Street, Crescent Head

If you'd like everything beautiful Crescent Head has to offer to be within an easy walk of your chosen accommodation, then Crescent View is the place for you. Located in May Street directly across the car park from cafes, shops and the Country Club, location doesn't get better for a stay in Crescent Head.

Crescent View is a large comfortable house with plenty of room and a huge front verandah where you'll practically live during your Crescent Head holiday. A large lock up garage makes it easy to lock away the car and boards.

Crescent View has a large open plan kitchen with dishwasher, 2 bathrooms and four bedrooms. Please note two bedrooms and one bathroom are accessed through a separate entrance off the front verandah making this house perfect for the extended family who would like some privacy.

**Bedding:** Queen bed in the main and 2nd bedrooms, single bed bunks in the 3rd, 4th and 5th bedrooms. No linen included.

**Sleeps: 10**

**Parking: 2**

**Bedrooms: 4**

**Bathrooms: 2**





## Ultimate Layout for 2 Families



### Crezzo, 27 Skyline Crescent, Crescent Head

**Sleeps: 12**

**Parking: 2**

**Bedrooms: 5**

**Bathrooms: 3**

Crezzo offers the ultimate layout for extended families or 2 separate families. There are 2 main size bedrooms, each with an ensuite and a 3rd bathroom downstairs which services the remaining 3 bedrooms. Enjoy holiday entertaining with a quality kitchen with dishwasher and a spacious living and dining area. included are 3 decks, one with ocean views and another with bush views. The back deck is perfect for alfresco dining.

Crezzo sleeps 12 people very comfortably.

**Bedding:** Queen bed in the main and 2nd bedrooms, single bed bunks in the 3rd, 4th and 5th bedrooms. No linen included.





## Great Location, Spacious & Views



### Units 1 & 2 Dolphin Court, 1 Gowing Street, Crescent Head

**Sleeps: 8**

**Parking: 2**

**Bedrooms: 3**

**Bathrooms: 2**

Two wonderfully located three bedroom townhouses, each with two bathrooms, modern kitchen and lock up garage. Conveniently located directly across the road from the golf course, Dolphin Court provides an easy relaxing holiday - a short walk to the Country Club, shops, beach, cafes and enjoys lovely water views.

Dolphin Court is ideal for two families who wish to holiday together yet still maintain their privacy. Sleeps 8 each.

**Bedding:** Queen bed in the main and 2nd bedrooms, bunk bed with a double base and a single on the top + a single bed in the 3rd bedroom. No linen included.





## Great Value, Handy Location



### Dunroamin, 20 Main Street, Crescent Head

**Sleeps: 4**      **Parking: 1**  
**Bedrooms: 2**      **Bathrooms: 1**

This charming two bedroom ground floor duplex is centrally located and is an easy walk from the shops and beach.

Featuring a pleasant outlook from the front of the property, a renovated bathroom and a lock-up-garage. Dunroamin makes for a great value holiday destination.

**Bedding:** Queen bed in the main bedroom and two single beds in the 2nd bedroom. No linen included.





**Oh What a View!**



## **Endeavour, 10 Dulconghi Street, Crescent Head**

**Sleeps: 6**

**Parking: 1**

**Bedrooms: 3**

**Bathrooms: 1**

Modern and well appointed 3 bedroom holiday house with magnificent sea views to the north overlooking The Point (Little Nobby). 38 steps up to the house and the views will delight! You can enjoy the stunning views from the sunny verandah as well as open plan living and dining area.

Features a fully equipped kitchen with dishwasher to make entertaining a breeze, off street under cover parking, and gas BBQ on the deck.

**Bedding:** Double bed in the main bedroom and two singles in each of the 2nd and 3rd bedrooms. No linen included.



## Great Movie, Great House



### Endless Summer, 12 Stewart Street, Crescent Head

**Sleeps: 6**      **Parking: 2**  
**Bedrooms: 3**      **Bathrooms: 2**

This house was extensively renovated several years ago and is now a very attractive holiday home. There are extensive sea and village views from the covered verandah on the northern side.

The open style kitchen features a dishwasher to make your holiday entertaining a breeze. The polished timber floors, ceiling fans and large windows give the summer holiday atmosphere all year round.

**Bedding:** Queen bed in the main bedroom, two singles and a trundle in the 2nd bedroom and one single in the 3rd bedroom. No linen included.





**So Close to the Beach**



## **Fleur Cottage, 7 Willow Street, Crescent Head**

**Sleeps: 6**  
**Bedrooms: 3**

**Parking: 1**  
**Bathrooms: 1**

Comfortable three bedroom holiday cottage located very close to the beach, shops and Country Club. The fenced yard is ideal for small children. Leave the car in the carport and walk to everything. A very popular home with young families as well as our more senior visitors.

**Bedding:** Queen bed in the main and 2nd bedroom, bunk bed with double base and single on the top in the 3rd bedroom. No linen included.



## Handy Location, Value & Views



### Golden Sands, 5 Hodgson Street, Crescent Head

**Sleeps: 3**

**Parking: 1**

**Bedrooms: 2**

**Bathrooms: 1**

Neat and well kept two bedroom cottage within close proximity to all your holiday conveniences and just 400m to the beach.

Easy access from lock up garage, laundry downstairs and the yard is fully fenced. Good sea views to the north from the sunroom and kitchen.

Includes washing machine, microwave, TV, DVD, lock up garage and gas BBQ.

**Bedding:** Double bed in the main bedroom and single bed in the 2nd bedroom. No linen included.





## Easy Walk to the Beach



### Good Vibes, 18 East Street, Crescent Head

**Sleeps: 9**      **Parking: 2**  
**Bedrooms: 3**      **Bathrooms: 2**

Fully renovated in 2014, Good Vibes is a well presented three bedroom home just a short walk to the beach with lots of off street parking.

The kids will enjoy their very own play area, there's a lovely sunny living area and the kitchen has a dishwasher. Enjoy the new timber deck with water glimpses and a beautiful leafy outlook.

Good Vibes is an easy holiday - park the car and walk everywhere. Good Vibes is an easy stroll to the beach, cafes and specialty shops of Creso. You'll love your time here as the owners have paid particular attention to detail and it's beautifully decorated in a beachy theme.

There's peaches and mangos growing in the back yard, a day bed in the living area to relax in the sun and plenty of "Good Vibes" in the house. Enjoy your stay year after year at this fantastic holiday home.

**Bedding:** King bed in the main, bunk bed with double base and single on the top + single bunk beds in the 2nd, bunk bed with double base and single on the top in the 3rd. No linen included.



## Big Deck with Views



### Hampstead, 32 Main Street, Crescent Head

**Sleeps: 8**

**Parking: 1**

**Bedrooms: 4**

**Bathrooms: 1**

Hampstead is a modern holiday home with beautiful views, 4 bedrooms, 1 bathroom, 2 toilets, garage, sunny balcony with gas BBQ and plenty of style - it's your ideal home away from home. Also if that's not enough, it has two living areas and two balconies.

Located only a short walk to the village shops and beach, Hampstead is ideally located facing north to catch plenty of winter sun and summer breezes. Its airy bright interiors will lift your spirits and the sunny balcony is the ideal spot to relax and read or just enjoy the water views.

**Bedding:** Double bed in the main, queen bed in the 2nd, single bunk beds in each of the 3rd and 4th bedrooms. No linen included.





## Fantastic Location



### Units 1 & 2 Heather's Seaside Apartments, 10 Rankine Street, Crescent Head

**Sleeps: 6**

**Parking: 1**

**Bedrooms: 3 / 2**

**Bathrooms: 2 / 1**

Heather's 1 and 2 are modern townhouses overlooking the golf course across the water to The Point. The accommodation is comfortable and well equipped, the shops and club are less than 150m away and the beach less than 250.

Heather's offers the perfect location for a family or 2 couples to have a relaxing, stress free break, including air-conditioning.

**1 – Bedding:** Queen bed in the main, two singles in the 2nd, queen bed and double sofa bed I the 3rd bedroom.

**2 – Bedding:** Queen bed in the main, queen bed in the 2nd + single bunk beds.

No linen included.





## Big Deck with Bigger Views



### Hi View, 18 Dulconghi Street, Crescent Head

Spectacular sea views are the highlight of this holiday house. From the front deck there are 180 degree views of the ocean, beach, Killick Creek and the mountains.

This house has been recently renovated and a new kitchen has been installed. Handy, comfortable style 4 bedroom home, located close to village centre and beach. The property includes: BBQ area in the rear of the house, washing machine, microwave, colour television, DVD player, and carport.

**Bedding:** Double bed in the main, 2nd and 3rd bedrooms and single bunk beds in the 4th. No linen included.

**Sleeps: 9**  
**Bedrooms: 4**

**Parking: 1**  
**Bathrooms: 1**





## Loads of Character – Central Location



### Jupiter, 3 Scott Street, Crescent Head

**Sleeps: 5**  
**Bedrooms: 2**

**Parking: -**  
**Bathrooms: 1**

Jupiter is a character filled renovation of "the old post office" in Scott Street, just around the corner from the shops and club. The light filled central living and dining area is air conditioned and offers a wonderful space to relax and forget all the cares of the world. French doors open out to a small deck and a sunny back yard with BBQ for those casual dinners with family and friends.

Both the kitchen (with dishwasher) and bathroom are have been fully renovated.

Jupiter is an ideal get away for a couple or small family looking to escape the pressures of modern life but wanting a convenient location just around the corner from the shops and the beach.

**Bedding:** Queen bed in the main bedroom, bunk bed with double base & single on the top in the 2nd bedroom. No linen included.



## Over the Top of the Bay



### La Maison de Shines, 13 Dulconghi Street, Crescent Head

**Sleeps: 6**  
**Bedrooms: 3**

**Parking: 2**  
**Bathrooms: 1**

Comfortable three bedroom brick home with sunny aspect and views of the beach and ocean.

Perfect for two couple or smaller family groups. Fully equipped and spacious timber kitchen with gas cooktop and dishwasher to make entertaining a breeze. Why not take it to the verandah with the Weber gas barbecue for summer cook outs.

The perfect spot for your next relaxing holiday break.

NB: The fireplace is out of order and not to be used under any circumstances.

**Bedding:** Queen bed in each of the main and 2nd bedrooms with single bunk beds in the 3rd bedroom. No linen included.





## Charm & Historic Character



### Little Thursday, 18 Main Street, Crescent Head

**Sleeps: 6**  
**Bedrooms: 3**

**Parking: 2**  
**Bathrooms: 2**

Little Thursday is centrally located, literally metres from all of Crescent Heads amenities and with no hills to traverse. This historical cottage is one of the original Crescent Head buildings and it has undergone a dramatic facelift to ensure this little gem survives for many more years to come.

Enjoy the relaxing water and mountain views from the living area and sunny deck. Out the back in the good sized yard is a hooded gas BBQ, rustic timber table and chairs and a unique outdoor shower to cool off in. The lounge has a 50 inch flat screen TV, comfortable lounges and gas heating.

The main bedroom features an ensuite and built in robe. The second bedroom with high ceilings also has a queen size bed and an additional day bed.

**Bedding:** Queen bed in each of the main and 2nd bedrooms with a bunk bed with double base & single on the top in the 3rd bedroom. No linen included.



## Character, Views & Location



### Longboard, 1 Hill Street, Crescent Head

**Sleeps: 10**

**Parking: 2**

**Bedrooms: 5**

**Bathrooms: 2**

Character 5 bedroom cottage in a fantastic location. Leave the car and walk to everything. Enjoy the ocean views and summer breezes from the large, covered outdoor entertaining area. Open plan living, dining and kitchen provides a relaxed space for everyone to get together.

"Longboard" will have you wanting to come back year after year.

**Bedding:** King bed in the main, queen bed in both the 2nd and 3rd, two singles in the 4th and single bunk beds in the 5th bedroom. No linen included.





## Great Atmosphere & Location



### Lorikeet Retreat, 11 Hodgson Street, Crescent Head

Lorikeet Retreat is a spacious 2 level family holiday home situated only 300 metres to the beach. Includes microwave, TV, DVD, BBQ and lock up garage.

Downstairs is the kitchen and dining room opening onto a deck to the northern side. Shower, toilet and laundry with washing machine.

Upstairs is 2 bedrooms, plus lounge room with windows along northern wall. A real winter sun trap and the perfect place to enjoy the sea views. Also on this level is a shower and toilet.

**Bedding:** Queen bed in the main bedroom and a double in the 2nd bedroom with two singles + a trundle bed in an alcove area. No linen included.



**Sleeps: 7**  
**Bedrooms: 2**

**Parking: 1**  
**Bathrooms: 2**



## Large Holiday Home in Prime Location



### Malibu, 6 Dulconghi Street, Crescent Head

**Sleeps: 10**  
**Bedrooms: 4**

**Parking: 1**  
**Bathrooms: 2**

Malibu is located in a prime headland position and has three bedrooms upstairs and a fourth sleeping area in an open walk through room on the middle level. Located in Dulconghi Street, the home faces north and overlooks the golf course, the bay and the beach, and our famous Point and Surfing Reserve.

The property features a combined kitchen and dining room, large lounge room with ocean views from your lounge chair and a master bedroom with air-conditioning and ensuite. Two more bedrooms and a fourth sleeping area make this property very comfortable. Enjoy the huge BBQ area and parking for one car on the concrete apron.

Malibu is rented on an "upstairs only" basis and perfect for a large family or two families holidaying together. Please note the one bedroom unit downstairs has been blocked off and is for owner use only.

**Bedding:** King bed in the main, queen bed in the 2nd, bunk bed with double base and a single on the top in the 3rd and three single beds in the 4th bedroom. No linen included.





## Large Holiday Home in Prime Location



### Mezzaluna, 9 Comara Terrace, Crescent Head

**Sleeps: 4 / 10**

**Parking: 2**

**Bedrooms: 2 / 4**

**Bathrooms: 2 / 3**

Mezzaluna offers the best of everything: beautiful water and mountain views, large north facing balcony and spacious living areas. Upstairs offers two bedrooms, study, stylish kitchen with dishwasher and two bathrooms (main bedroom with ensuite and walk-in robe). Downstairs offers 2 bedrooms, 1 bathroom / laundry and its own kitchen and combined dining and living area. There is a huge double lockup garage - plenty of room for the surfboards and bikes. If you are looking for a stylish holiday home away from home Mezzaluna is it!

Approximately 700m to the beach.

**Bedding whole house:** Queen bed in the main and 2nd bedrooms, double bed in the 3rd, two singles in the 4th and a double sofa bed in the living area. No linen included.

**Note:** Upstairs can be rented on its own outside of school holidays.

**Bedding upstairs only:** Queen bed in the main bedroom and double bed in the 2nd bedroom. No linen included.



## Large Modern Home with Water Views



### Mirador, 1 Stewart Street, Crescent Head

**Sleeps: 9 / 13**

**Parking: 4**

**Bedrooms: 4 / 6**

**Bathrooms: 2 / 4**

Mirador is a modern, north facing house with lovely sea views from the house and the large entertaining deck. Situated on the corner of Stewart and Gowing Streets, the beach, golf club and cafes are all within an easy walk. Mirador is ideal for 2-3 families wishing to holiday together, while still maintaining some autonomy and privacy. Accommodation consists of 6 bedrooms, 4 bathrooms, 3 living areas, 2 kitchens with dishwashers and decks with water views.

Bedrooms 5 and 6 are located in the separate 2 bedroom section of the house which is accessed externally by walking outside to the other side of the house and going in a separate door on the eastern side. This part of the home can be closed off to allow for the remaining 4 bedroom accommodation only.

There is off street undercover parking for up to 4 vehicles on Stewart Street.

**Bedding whole house:** Queen bed in the main, double bed in the 2nd and 4th, single bunk beds in the 3rd, double bed + single in the 5th and a double bed in the 6th. No linen included.

**Bedding 4 bedrooms:** Queen bed in the main, double in the 2nd and 4th, single bunk beds in the 3rd.





## Large Modern Home with Water Views



### Oceanview, 6 Stewart Street, Crescent Head

**Sleeps: 4**  
**Bedrooms: 2**

**Parking: 1**  
**Bathrooms: 1**

Comfortable two bedroom holiday house with new carpet and kitchen in popular location facing north. The front deck takes advantage of views across the golf course to the ocean, summer breezes and winter sun.

Easy 200 metre walking distance to shops, beach, Country Club, bowls and golf.

Garage is located underneath - alongside small flat kept by owner for occasional use.

**Bedding:** Queen bed in the main bedroom and a king single + a single bed in the 2nd bedroom. No linen included.



## Spacious Holiday Home with Options



**Pandanus, 34 Main Street, Crescent Head**

**Sleeps: 2 / 8 / 10**

**Parking: 1**

**Bedrooms: 1 / 3 / 4**

**Bathrooms: 1 / 2**

Beautifully renovated and comfortable four bedroom home located a short walk to the beach, shops, cafes and Crescent Head Country Club. Upstairs includes a large entertaining deck and downstairs has an outside portico.

Accommodation options include the whole house which (sleeps 10), or can be split into 3 bedrooms upstairs (sleeps 8) or 1 bedroom downstairs (sleeps 2). Bathroom and kitchen on each level, and a shared laundry.

**Upstairs (1) Bedding** - Queen bed in the main and 2nd bedrooms, 2 sets of single bunks in the 3rd bedroom.

**Downstairs (2) Bedding** – Queen bed in the main bedroom.

No linen included.





## Bright and Airy Holiday House



### Pemberley, 30 Stewart Street, Crescent Head

**Sleeps: 6**  
**Bedrooms: 3**

**Parking: 1**  
**Bathrooms: 2**

Book your next holiday at Pemberley and enjoy the picturesque sea views from the deck, living, dining and kitchen areas. This holiday home has 2 modern bathrooms and a new kitchen with dishwasher for holiday entertaining. Offering 3 bedrooms, 2 living areas and a lock up garage. It's an easy walk to the beach, Country Club and the village shops.

Also for your use are the gas BBQ, washing machine, microwave, TV and DVD player.

Approximately 470 metres to the beach. Enjoy a relaxing holiday at Pemberley.

**Bedding:** Queen bed in the main bedroom and two singles in both the 2nd and 3rd bedrooms. No linen included.



## Soak up the Coastal Views



### Perfect Break, 1 Dulconghi Street, Crescent Head

Fantastically located large family home with outstanding water and coastal views as far as the eye can see. Enjoy the views from the kitchen and living areas which open out to a large entertaining verandah. Offering five bedrooms, two bathrooms and plenty of off street parking.

You're tucked away in a private setting at the eastern end of Dulconghi Street and still an easy stroll to the shops and beach.

This much loved family home is a beautiful holiday spot. Relax and enjoy.

**Bedding:** Queen bed in the main, 2nd, 3rd and 4th bedrooms, 2 single beds in the 5th bedroom. No linen included.

**Sleeps: 10**  
**Bedrooms: 5**

**Parking: 2**  
**Bathrooms: 2**





## Luxurious Beach House with Sensational Views



### Point Break, 14 Korogora Street, Crescent Head

**Sleeps: 10**  
**Bedrooms: 4**

**Parking: 2**  
**Bathrooms: 3**

This luxury home enjoys sensational 180 degree views of the beach, coast, Killick Creek and golf course. Purpose built, Point Break offers a fully equipped cooks kitchen. The open plan kitchen, living/dining area offers a beautiful and relaxed space for family dinners whilst enjoying spectacular views both from inside and from the wrap-around balcony which flow off the living area to maximise alfresco living.

The upstairs 2 bedrooms each have their own bathrooms. The main bedroom has a large deck with views and floor to ceiling windows which brings the sparkling vistas right to your pillow. The 2nd bedroom upstairs also has a balcony with views. The 2 downstairs bedrooms share a large well appointed bathroom.

The and table tennis and pool table in the double garage will ensure you enjoy your time away from the beach. Parking consists of 2 open car spaces, one at the front of the home and one at the rear of the home.

**Bedding:** Queen bed in the main and 2nd bedrooms, queen bed + single bunks in the 3rd and a double and a king single in the 4th bedroom. No linen included.





## Luxurious Beach House with Sensational Views



**Rosemaree, 24 East Street, Crescent Head**

**Sleeps: 10  
Bedrooms: 4**

**Parking: -  
Bathrooms: 3**

Rosemaree is a large and spacious four bedroom holiday home with lovely beach and water views ideal for a family. The living area opens to a shaded verandah perfect for alfresco dinners and entertaining. Polished timber floor boards throughout.

Located just an easy stroll down the hill to the beach, shops and cafes.

Rosemaree offers all the comforts of home with TV, DVD and CD players, microwave oven, dishwasher to the kitchen, barbecue, washing machine and dryer.

**Bedding:** Queen bed in the main and 2nd bedrooms, two single beds with a trundle in each of the 3rd and 4th bedrooms. No linen included.





**Popular Location, Comfortable Home, Lovely Views.**



## Rubes, 6 Korogora Street, Crescent Head

**Sleeps: 8**

**Parking: 1**

**Bedrooms: 3**

**Bathrooms: 2**

Rube's has undergone a major renovation in 2017. It now offers modern décor and stylish accommodation right in the heart of the village. Park the car in the garage and get set for a relaxing family holiday!

There are lovely ocean views from the front entertaining deck, living area and two of the bedrooms. The stylish kitchen is fully equipped including a dishwasher to make your holiday entertaining a breeze. Offering two bathrooms and a sheltered out door area out the back.

**Bedding:** King bed in the main, queen in the 2nd, two sets of king single bunks in the 3rd bedroom. No linen included.

NB: The upstairs area is not available for holiday rental.





## Fantastic Location



### Sea Salt, 24 Stewart Street, Crescent Head

**Sleeps: 8**

**Parking: 1**

**Bedrooms: 2**

**Bathrooms: 1**

Sea Salt is a pleasant two bedroom holiday house with a brand new kitchen in a great position for holiday makers being close to the beach, shops and attractions.

There is a large living area, opening out to the deck at the front of the house which enjoys good sea views to the north from the deck. Sea Salt is pet friendly holiday accommodation - on your day of departure please vacuum throughout to remove any pet hair and also pick up any pet poo in the backyard - failure to comply with these conditions will result in extra cleaning costs being charged to you.

NB. An extra room is available at the back of Sea Salt for \$140 per week. It consists of basic "sleep-out" style accommodation in a cabin at the rear of the house, ideal for older kids to have a bit of a camping style experience. While you still have all the comforts of home. Please contact us for more details.

**Bedding:** Queen bed in the main bedroom, two sets of single bunks in the 2nd bedroom and a double futon sofa bed in living room. No linen included.





## Fantastic Location



### Sea View, 3 Hodgson Street, Crescent Head

**Sleeps: 6**  
**Bedrooms: 3**

**Parking: 2**  
**Bathrooms: 1**

This street level three bedroom unit is about as central as you can get. The dining and lounge rooms open onto a north facing deck and offers views of the beach, Killick Creek and surrounding areas.

Facilities include reverse cycle air-conditioner, gas barbecue, washing machine and al-fresco deck with ocean views.

Guests have access to the fenced rear yard and clothes line.

**Bedding:** Double bed in the main bedroom, two singles in the 2nd and bunk bed with double base + a single on the top in the 3rd bedroom. No linen included.

NB: The lower level of Seaview contains the owners facilities and is sometimes in use by them.



## Luxury Bed & Breakfast Style Accommodation



### Shanti Suites, 7 Korogora Street, Crescent Head

**Sleeps:** 2 / 4

**Parking:** -

**Bedrooms:** 1 / 2

**Bathrooms:** 1 / 2

Comprising INHLUZANI suite and LAMBAZI suite which ooze with charm and warmth and comprise ensuite canopied bedrooms looking onto a sizeable all weather outdoor deck with panoramic views of the mountains, estuary and Crescent Head's world famous sweeping beach.

The ensuites comprise high quality separate and private showers / toilets / basins, the showers are tastefully decorated with Sharon's specially designed mosaics.

The suites both open onto a tastefully furnished lounge/dining/TV room with easy access to the deck, kitchenette and laundry. All very private, relaxed barefoot luxury.

The suites are let out to only one party at a time – an individual or couple or group travelling &/or holidaying together – guaranteeing your private space for you or your party.

**Bedding:** Queen bed in each of the suites. Linen is included.





## Art Deco Beauty with Coastal Views



### Shellseekers, 4 Hodgson Street, Crescent Head

**Sleeps: 8**

**Parking: 2**

**Bedrooms: 3**

**Bathrooms: 2**

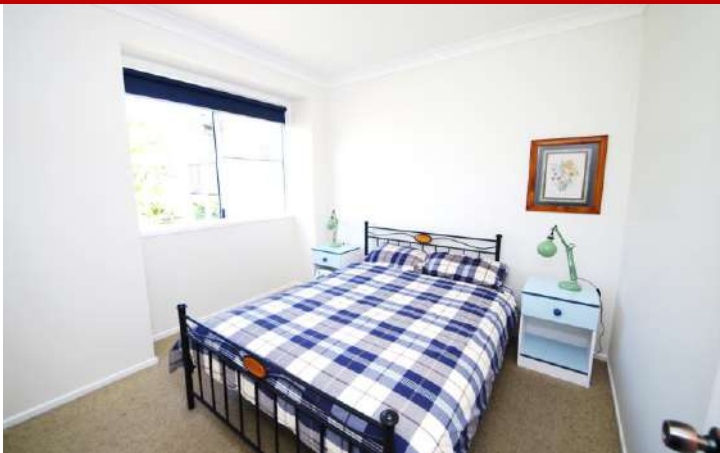
If you are looking for a beautifully presented, well located holiday property with a large and sunny breezy deck with wonderful water views then Shellseekers is the perfect choice. It is located just a few minutes walk to the shops, beach and facilities of Crescent Head. Shellseekers is an art deco, character filled home, with 3 large bedrooms, a great modern kitchen with stainless steel appliances and stone benchtops, 2 bathrooms including a second shower and toilet in the downstairs laundry, a new kitchen and plenty of living space.

The yard is fully enclosed, safe for children & suitable for small dogs. Enjoy reading a book on the comfortable front deck or take a leisurely stroll to the beach - Shellseekers is the perfect holiday house for a relaxing enjoyable holiday.

**Bedding:** Queen bed in the main and 2nd bedrooms, double and a set of single bunks in the 3rd bedroom. No linen included.



## Right in the Middle of it All



### Shiloh, 14 East Street, Crescent Head

**Sleeps: 7**

**Parking: 1**

**Bedrooms: 3**

**Bathrooms: 2**

Location location location - this family friendly three bedroom, two bathroom holiday house is a short walk to both local shops and the beach.

Upstairs, the home has two bedrooms, one bathroom, kitchen and a large living/dining area which expands onto an outdoor verandah with seating and stairs up to a second deck space with seating and panoramic ocean views.

Downstairs there is one bedroom with bunks and one bathroom and a single car space garage/storage space.

The home has a custom-built, hot outdoor shower and undercover laundry. There's even a Hills Hoist in the backyard, which features lawn and garden.

**Bedding:** Queen bed in the main, bunk bed with a double base and a single on the top + a single in the 2nd bedroom, single bunk beds + a single in the 3rd bedroom. No linen included.





## Water Views from Sunny Modern Home



### Skybeach House, 30 Skyline Crescent, Crescent Head

Large quiet two storey three bedroom holiday house overlooking famous Crescent Head Beach. Vast coastal and ocean views and just 1km stroll from beach, shops and cafes.

Spacious kitchen with stainless steel appliances and dishwasher to make holiday entertaining a breeze. Enjoy two living areas, two bathrooms, outdoor undercover BBQ area plus a large verandah perfect for outdoor dining and soaking up the views. Free parking & garage. 1km to beach.

**Bedding:** Queen bed in the main, double bed in the 2nd bedroom and two single beds in the 3rd bedroom. No linen included.



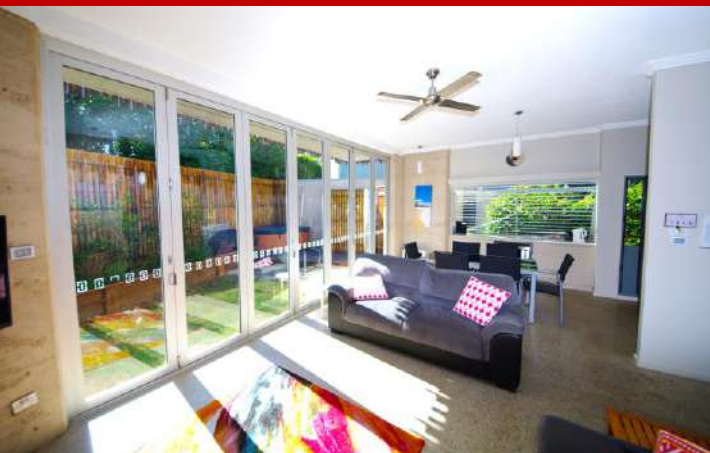
**Sleeps: 6**  
**Bedrooms: 3**

**Parking: 1**  
**Bathrooms: 2**





## New Eco-friendly Villas



### Units 1 – 5 Sun Worship, 9 Belmore Street, Crescent Head

**Sleeps: 8 / 10**

**Parking: 1 / 2**

**Bedrooms: 2 / 3**

**Bathrooms: 1 / 2**

All Sun Worship villas are independent of each other. They each have their own outside enclosed courtyard with outside shower and toilet. Villas 1, 2, 3 and 4 all have their own spas in the courtyard. They are all double storey with slightly different configuration upstairs. Downstairs they all have a kitchen/lounge area and a bunkroom which can sleep 6 persons. The bunkrooms are designed for children or up to 4 adults.

Includes free Wi-Fi access

**1 – Bedding:** Queen bed in the main, 2 x bunk beds each with double base and single on the top in 2nd bedroom. Linen is included.

**2 – 5 Bedding:** Queen bed in the main and 2nd bedrooms, 2 x bunk beds each with double base and single on the top in the 3rd bedroom. Linen is included.





## Unique & Pet Friendly



### The Tree House, 6 Gowing Street, Crescent Head

**Sleeps: 4**  
**Bedrooms: 1**

**Parking: 1**  
**Bathrooms: 1**

The Tree House will take you back to the good old days of surfing, when life was a treat, you slept on the beach and the loo was in the backyard. There's a lovely paved area for al fresco meals, one bedroom with queen size bed, fold down sofa to make a double bed in the TV area and kitchen with dishwasher. Please note the shower and toilet are accessed by going outside to the newly renovated indoor/outdoor bathroom. Private and pet friendly (just give us details about your four legged friend) - The Tree House is a one of a kind in Crescent!

**Bedding:** Queen bed in the main bedroom with a double sofa bed in the living area. Linen not included.

There is also the option to rent "The Van" and/or "The Shed" which both have double beds. This must be arranged at the time of booking and the rate is \$50 per night each, for the period of your stay.





## That Holiday Feel



### Yurung, 26 Dulconghi Street, Crescent Head

Enjoy a classic Aussie beach house family holiday at Yurung.

From the bright and airy kitchen, living area and large verandah you will enjoy some of the best views in Crescent Head. The home features two queen beds and a kids room with nautical style bunk beds, ensuite and a dishwasher.

Get away from it all for a relaxing holiday at Yurung. There is also a full size pool table available for use at an extra cost.

**Bedding:** Queen bed in each of the main and 2nd bedrooms with a set of small single bunks in the 3rd bedroom. Linen not included.



**Sleeps: 6**  
**Bedrooms: 3**

**Parking: 1**  
**Bathrooms: 2**